

# 3Com® WINport®



## Dial-Out Networking Software

*Efficient and cost-effective shared modem access*

WINport Dial-Out Networking software provides cost-effective access to ISPs, online services, and terminal applications through shared modems. By sharing these resources, organizations reduce network complexity, lower deployment costs, enhance security, and minimize maintenance.

### Key Benefits

**Convenient modem sharing** software concentrates the functions of a dedicated modem and phonenumber for every LAN user into one compact, shared platform.

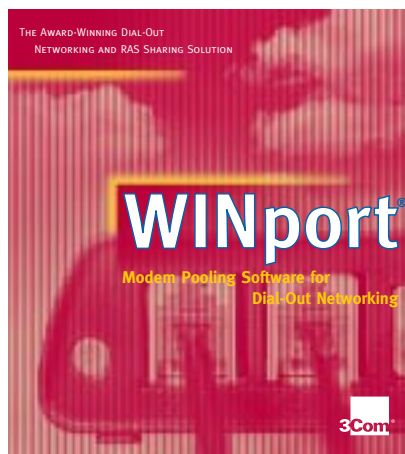
**More efficient use of resources.** The WINport Dial-Out Networking software is less costly to deploy and easier to maintain than dedicated desktop modems.

**Completely transparent.** Creates a virtual modem—compatible with most existing dial-out networking software and other applications that require a modem—on every desktop.

**Enhances security** by closing potential holes in the network firewall. It also enables administrators to deploy centralized strategies to deter unauthorized access to the LAN.

**Centralizes control** enabling network administrators to easily monitor and report on the origin, destination, time, and duration of every call.

**Scalable design** permits easy expansion as the network grows and the demand for dial-out access increases. Start with a single shared modem port and grow that service to support hundreds of modems and ISDN CAPI 2.0 devices.



WINport Dial-Out Networking software enables businesses to deliver dial-out functionality to the desktop in a simple, efficient, and extremely cost-effective manner. It eliminates the need for dedicated modems and phonelines by providing desktop dial-out services directly over the LAN. Users anywhere on the network can access ISPs, online services, remote offices, terminal applications, and other dial-up services quickly, easily, and transparently.

WINport Dial-Out Networking software takes advantage of the existing network infrastructure. The application is installed — along with RASport, an exclusive utility bundled with WINport Dial-Out Networking software — on the remote access server (RAS), making all modems simultaneously available to both WINport and the RAS.

When users dial out from the desktop, WINport Dial-Out Networking software dynamically connects them to the first available port on the RAS. Users can also select

an available modem from a pop-up window. If the modem selected or all modems in the pool are busy, it prompts the user to queue for the next available modem. This entire operation is transparent to the user. There is nothing to change in the user's dial-out networking software or applications that require a modem.

### How WINport Dial-Out Networking Works

WINport Dial-Out Networking software takes advantage of the existing network infrastructure to provide dial-out functionality from the desktop over the LAN. By installing WINport Dial-Out Networking software and RASport (an exclusive utility bundled with this modem-pooling software), the remote access server (RAS) becomes a two-way communications highway, with all modems simultaneously available to both the WINport Dial-Out Networking software application and the RAS.

# Software

Unique modem-pooling application

### Continued from Page 1

When users dial out from the desktop, WINport Dial-Out Networking software dynamically connects them to the first available modem port on the RAS. Users can also select an available modem port through a pop-up window. If the modem selected (or all modems in the pool) are busy, the program prompts the user to queue for the next available modem.

The entire operation is transparent. There is nothing to change in the user's dial-out networking software or the applications that require a modem. Users establish dial-out connections just as they would with a dedicated modem and phoneline.

### Specifications

#### Minimum System Requirements

##### Window Server

Windows 2000, Windows NT 4.0 (SP5 or higher)/Windows 95/98 operating system

Intel Pentium 100+ MHz

16550 UART or compatible serial port(s)

External compatible modem(s)

Internal/external compatible

ISDN – CAPI (2.0) device(s)

TCP, UDP, IPX and/or NetBEUI

4.5 MB of free disk space (minimum)

64 MB RAM or higher

##### WINport Client Redirector

WINport NT (4.0), Windows 95/98 operating system

Intel compatible 486 CPU or higher

TCP, UDP, IPX and/or NetBEUI

900 KB of free disk space (minimum)

##### WINport Administrator

Windows 2000, Windows NT, Windows 95/98 operating system

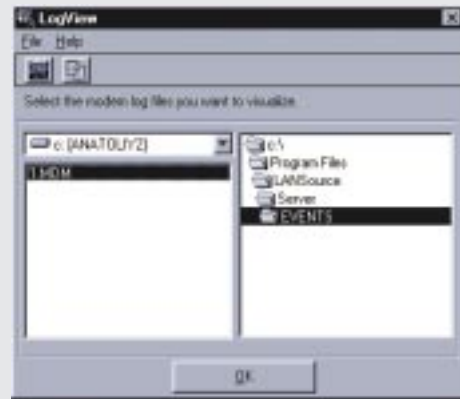
Intel compatible 486 CPU or higher

TCP, UDP, IPX and/or NetBEUI

1.5 MB of free disk space (minimum)

### LogView screen capture

WINport Dial-Out Networking software improves tracking and control of dial-out activities by enabling network administrators to easily monitor and report on the origin, destination, time, and duration of all calls.



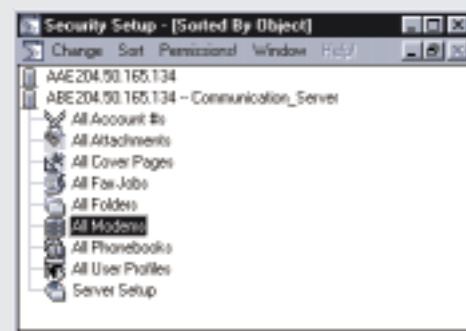
### Security setup screen capture

The Server Administrator has complete control over the dialing restrictions and access to modems for both individual users and user groups.



### Network setup screen capture

TCP/IP support means users can make a dial-out networking call from virtually any WINport Dial-Out Networking server in the LAN or WAN regardless of network platform.



#### 3Com Corporation

5400 Bayfront Plaza  
P.O. Box 58145  
Santa Clara, CA 95052-8145  
Phone: 1 800 NET 3Com or  
1 408 326 5000  
Fax: 1 408 326 5001  
World Wide Web: www.3com.com

To learn more about 3Com products and services, visit our World Wide Web site at [www.3com.com](http://www.3com.com). 3Com Corporation is publicly traded on Nasdaq under the symbol COMS.

Copyright © 2000 3Com Corporation. All rights reserved. 3Com, the 3Com logo, and WINport are registered trademarks of 3Com Corporation. Pentium is a trademark of Intel Corporation. Windows and Windows NT are trademarks of Microsoft Corporation. All other company and product names may be trademarks of their respective companies. All specifications are subject to change without notice.